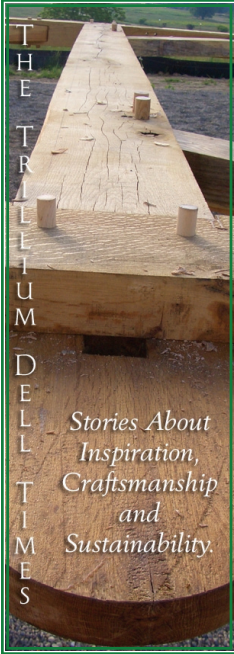


## Turning Trees into Timbers ~ An Owner's Perspective



Recently, Trillium Dell interviewed Dale and Darla Sass of Streator, IL about their new timber frame home. Below are their responses.

### Why a timber frame?

After attending a Log & Timber Home Show two years ago we came away convinced that a timber frame home was what we wanted: very energy efficient, lower maintenance than a log home, and much more unique. It also would allow us to use our own timbers where a log home would not.

*Tell us about incorporating your own timbers.*

We wanted to make our home special by incorporating wood from our own farm. We have a small sawmill operation and the people at Trillium Dell



*Pictured left: CAD drawing of the Sass frame, highlighting three species of hardwoods incorporated.*

*How does your timber frame fit into the concept of Green Building?*

All of the timbers for our home were harvested from local timbers, most from our own. We received the Conservation Family Farm of the year award several years ago in part because of the thousands of trees we had planted in our timbers. Trees harvested were mature trees that needed to be taken down to enhance the growth of younger seedlings. Most of the oak was from standing dead trees which will have a distressed oak appearance. The ash trees were all mature and will likely be lost to the approaching ash bore. Why not use this beautiful wood before it is destroyed?  
*(cont'd on p. 5)*

were willing to let us provide timbers cut to their dimensions.

Trees were harvested last January and February. Sawing took place from March through June with the first load delivered to Trillium Dell in May. The second load went in June when the basement timbers were complete and could be hauled home. We wanted to use different species; oak was chosen for the basement and outside timbers because of its tolerance to the elements, the great room, main frame, and kitchen is ash. Walnut was cut for our sunroom.

Willoughby Farm, site of the Gindler Barn restoration, pictured below (story p. 2).



### Inside this issue:

Gindler Barn Restoration 2

Featured Employee 2

In the News 3

The Green Corner 3

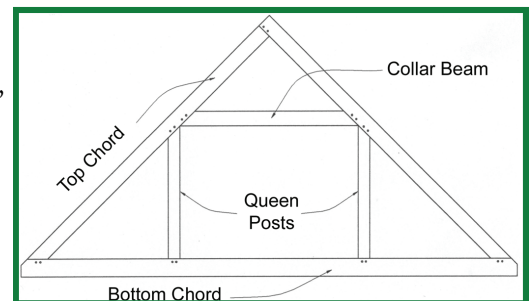
Will County Historical Society 4

Trebuchet! 5

Trees to Timbers, (cont'd) 5

## Anatomy of a Timber Frame - the Queen Post Truss

In queen post trusses the mid-span roof load is transferred to the eave posts by the two vertical posts within the truss. Strictly defined a queen post truss is a roof truss having two vertical posts between the rafters and the bottom chord; the upper ends of the vertical posts, or the rafters very near to the queen posts, are connected by a straining beam (collar beam), the straining beam may or may not be braced by the queen posts. Specifically the queen post truss frame allows for a clear and open span with no centralized posts, in effect creating an open space central to the floor plan.



## Gindler Barn Restoration ~ A Collaborative Effort



*Above: Henry Wallace reads a traditional German toast celebrating the safe & successful raising, Mark Badasch of the Collinsville Area Recreation District looks on.*

The Gindler project was completed this July during a two week partnership between the Trillium Dell Timberworks, the Timber Framers Guild of North America, and the Collinsville Area Recreation District (CARD). With a robust and skilled volunteer core from CARD, an enthusiastic group of teachers and apprentices from the Guild, and extra advance legwork from TDTW, we collectively exceeded our original scope of work to complete the frame restoration and re-erection. In addition to this work, we also completely sheathed and painted the exterior with vertical cypress siding, reinstalled most of the



*Above: Matt Jenkins (TDTW) works away.*

original stanchions and interior partitions and floors, and installed rafters, skip sheathing and corrugated steel roofing. As CARD's Executive Director, Mark Badash, remarked: "The Recreation District was excited to be able to team with Trillium Dell Timberworks on another project, after two years, and to bring in the Timber Framers Guild as well. Our experience has been that Trillium Dell Timberworks brings a high level of professionalism, talent and dedication to a project. Gindler Barn is the living proof of the high caliber work our joint

effort was able to put together. The thanks of our agency and our community go to everyone associated with the Gindler Barn Project!"

And what better way to inspire community involvement than the delicious food, a great camping site, and the presence of the Gindler family who added invaluable input throughout the re-erection. The entire event was captured on video by Carbondale videographer, Richard Kuenneke, owner of Oakview Road Media, so check it out [youtubecom./GindlerBarn](http://youtubecom./GindlerBarn)



*Above: Gindler Barn restored, July 2008.*

## Featured Trillium Dell Timberworks Employee ~ Brian Drobushевич



Brian Drobushевич, with Trillium Dell since 2003 serves as Shop Foreman. Brian has moved up the ranks at Trillium Dell, first honing his skills as a timber framer in the shop and as an integral part of many raising crews. Brian has traveled with Trillium Dell on a variety of restoration and new construction projects, always meeting challenges head on. His recent promotion to Shop Foreman was a natural next step. We look forward to many more successful timber frame projects with Brian at the helm.

*Left: Brian contemplates the Blacksmith's Shop dismantle while enjoying an apple.*

## Trillium Dell In the News

*Tim Narkiewicz presents at Gardner Museum of Architecture & Design.*

Restoration Project Manager, Tim Narkiewicz, gave a presentation to a group of barn enthusiasts at the Gardner Museum of Architecture and Design in Quincy, Illinois, on August 28<sup>th</sup>. The presentation focused on Barn Restoration Techniques and Practices, and was one of several presentations coinciding with the Gardner's "Historic Barns and Farms" special exhibit. The audience was diverse, ranging from people who are concerned about our disappearing rural landscape to barn owners who had specific questions about how to save their barn. The presentation walked the audience through the planning, preparation and execution stages of barn restoration, drawing upon many examples of barns TDTW has restored. It also covered the assessment criteria used to determine the feasibility of restoring a barn, and how these criteria factor into restoration and adaptive re-use decisions.



*Above: Aerial view of Trillium Dell's facility, summer 2008.*

The objective of the presentation was for participants to bring this information back into their communities in hopes of avoiding the oft-told refrain, "I'd have fixed my barn if only I knew there was someone who knew how".

In this small way, TDTW hopes to continue its effort to save our vanishing rural landscape. TDTW also wishes to thank Vikki Ebbing, the Museum Coordinator who arranged this presentation and exhibit, who also realizes the importance of vernacular structures to American architecture.

*A.I.A. Continuing Education Credits.*  
Need AIA CEUs? Trillium Dell staff are registered through the Timber Frame Business Council (timberframe.org) to provide continuing-education credits for architects through the American Institute of Architects program. The presentation, "Introduction to Timber Framing," is designed to answer architects' questions about timber framing and how to incorporate timber framing into designs and plans. If your architecture firm would like to schedule a lunch and learn, please contact Mark Meinhart at (309) 224-7990 or mark@trilliumdell.com.



*Above: Shawn Smith & Brian Drobushевич confer in our production shop.*

## The Green Corner - Harnessing the Energy of Used Oil

At Trillium Dell we constantly strive to reduce our ecological footprint: from offering our clients locally sourced hardwoods and reclaimed materials to consciously shopping with neighborhood vendors for office and shop supplies. Our buildings are heated with a wood fired furnace, which allows us to turn our scrap material into heat. As a supplement to our wood furnace / hot water system, we've recently installed a Clean Burn furnace, allowing the used oil from our vehicles and machinery to generate safe and efficient heat. The same Clean Burn technology operates in Antarctica & Siberia, and prevents used oil from contaminating the environment. Learn more about this innovative system at: [www.cleanburn.com](http://www.cleanburn.com). Upcoming issue: Trillium Dell captures wind energy.



## Will County Historical Society Relocation Project



*Above:* Blacksmith's Shop dismantled for salvaged materials.



Rod Eklund of Trillium Dell guides a log from the Settlement Cabin into storage, *above*.

Trillium Dell Timberworks was contracted to move three buildings for the Will County Historical Society to a temporary location owned by Chevron. With a grant from the Give Something Back Foundation of Lockport, Illinois, Will County Historical Society hired Trillium Dell to remove a total of twelve buildings adjacent to the I&M Canal comprising their "Pioneer Settlement" in order to redevelop the existing site for a Lincoln memorial. Trillium Dell completed this work in just three intense weeks to meet site re-development deadlines. In the meantime, WCHS is developing its plans to move most of the twelve buildings to a new, larger site, located on Forest Preserve land within the next couple years.

Buildings dismantled and moved included a stone smokehouse, the Symmerton Depot, Blacksmiths Shop, Wells Corner School, farmhouse, and two log buildings. In addition, the Mokena Jail, tinsmith shop, well, and privy were removed from the I&M Canal site. To learn more about Will County, please see [www.willcountyhistory.org](http://www.willcountyhistory.org).



Train station on the move, *above*.



*Above:* Smokehouse prepped for the move.

## Trillium Dell to Build Trebuchet in Conjunction with Woodland View Farm

### Trillium Dell Participates in Knox County Scenic Drive.

With the fall season comes local festivals, ours is the Knox County Scenic Drive. Hosted by the wonderful folks at Walnut Grove Farm, ([walnutgrovefarm.com](http://walnutgrovefarm.com)) our crew will demonstrate the craft of timber framing. This years project, a

trebuchet, promises to be our most interesting yet. The trebuchet, 1/3 scale of an original 13th century trebuchet will be crafted from local oak with the exception of the southern yellow pine throwing arm. Thanks to Grigg Mullen and Ed Levin for engineering and design work.



*Left:* Trebuchet to be built by Trillium Dell during Knox County Scenic Drive, October 2008. Woodland View Farm will share in the use and upkeep of the trebuchet. See [woodlandviewfarm.com](http://woodlandviewfarm.com) for information on this local horse boarding facility.

## Trees to Timbers, (cont'd)

All of the boards trimmed from edges of timbers were dried and will be used for flooring, ceiling tongue & groove, cabinets, trim



and stairways in our new home. Our new home will be heated with radiant heat in the floors provided by an outdoor wood burner that will use sawmill scraps and tops of trees harvested. Ceiling sunlights will be installed in several areas to reduce electricity use. SIP panels used in the timber frame construction should also reduce energy consumption. Large windows on the south will provide passive solar heat during winter months.

*Please comment on the design process.* Trillium Dell has gone out of their way to assist us in designing the home we want. The extensive questionnaire that started the process forced us to think long and hard about what we really wanted in our home. When the initial cost estimate was determined to be too high, they worked with us to reduce the cost with the least amount of change to our plan.

*Anything else?* The entire process beginning with planning and dropping trees has been a lot of fun and very rewarding as our scrap book grows. We are so excited and anxious to see the frame go up.

*Dale and Darla Sass are part of a 6th generation family grain farming operation. Their new home will be built from timber purchased by Dale's Great-Great Grandfather in 1864. Dale saws and sells hardwood lumber on the side, as well as serving as organist at their church. Darla works part time at a local florist, raises Lab puppies and can't wait to decorate their new home. All of us at Trillium Dell wish them many years of enjoyment in their custom timber frame home.*



## Fall 2008 Events - Trillium Dell Timberworks



### TRADITIONAL BUILDING

EXHIBITION AND CONFERENCE September 19 & 20, Navy Pier Festival Hall, Chicago, IL.

We'll be exhibiting in booth #1006, as well as demonstrating "Traditional Joinery in Timber Frame Restoration" on Saturday from 11:30 - 1:30 p.m. Interested in attending? Contact our office (309) 289-7921 for complimentary exhibit hall passes available upon request. Exhibit hall hours are 11 - 5 Friday & 11 - 4 Saturday.



Log Home & Timber Frame Show October 3-5, Schaumburg, IL. Visit with Trillium Dell at our booth (#716). Show hours are: Friday 11 - 7, Saturday 10 - 7, & Sunday 10 - 4. Find out more about the Expo at: [www.logexpo.com](http://www.logexpo.com).

Knox County Scenic Drive - October 4, 5, 11, & 12, Knoxville, IL. - Trillium Dell to build trebuchet at Walnut Grove Farm, more on p. 5.

Piatt County Barn Tour - October 10-12, Piatt County, IL.

For more information please contact Peg Bargon (217) 722-0193 or Stacy Bradshaw (217) 762-2128.

Timber Frame Home Raising - Fall 2008, Streator, IL. Please contact our office for details (309) 289 - 7921 or [brandee@trilliumdell.com](mailto:brandee@trilliumdell.com).

